

# MRT DUMPER

**LAURINI**



**Laurini Officine Meccaniche Srl**

Località Spigarolo. 43011 Busseto (PR). Italy

Phone: +39 0524.91844 Fax: +39 0524.91428

[www.laurini.com](http://www.laurini.com)

E-mail: [laurini@laurini.com](mailto:laurini@laurini.com)

# MRT DUMPER

Our new series of **rotary dumpers with rubber tracks** has truly exceptional and cutting-edge features:

The perfect match between the **Caterpillar engine** and the **two Danfoss pumps** controlled by Plus1 electronics. allows the best use of power and makes **counter-rotation of the tracks possible even when fully loaded.**

Hardox dump body. super comfortable cabin. pneumatic seat. dual rear camera and right side. single or double seat with ergonomic joysticks.



	MRT-250R	MRT-300R	MRT-330R HD MAX
<b>PERFORMANCE</b>			
Carrying Capacity	8 tons	15 tons	20 tons
Speed – 1st gear	5 km/h	4 km/h	6 km/h
Speed – 2nd gear	10 km/h	9 km/h	12 km/h
Gradeability	58% (30°)	58% (30°)	58% (30°)
Bed dump capacity	4.5 m <sup>3</sup>	9 m <sup>3</sup>	12 m <sup>3</sup>
<b>DIMENSIONS</b>			
Total length	6.3 m	6.3 m	7 m
Total width	2.5 m	3 m	3 m
Crawler distance c/c	1.8 m	2.2 m	2.3 m
Crawler width	700 mm	800 mm	760 mm
Total height	3.20 m	3.40 m	3.20 m
Machine weight (empty)	14,000 kg	19,000 kg	22,000 kg
Machine weight (load)	22.000 kg	34.000 kg	42.000 kg
Ground pressure (load)	0.55 kg/cm2	0.7 kg/cm2	0.8 kg/cm2
<b>ENGINE</b>			
Brand	<b>CATERPILLAR</b>	<b>CATERPILLAR</b>	<b>CATERPILLAR</b>
Emissions regolamentation available	Tier IV – Stage 5	Tier IV – Stage 5	Tier IV – Stage 5
Displacement	7.1 l	7.3 l	7.3 l
Nominal output/rpm	225 CV	302 CV	302 CV
Battery	12V each (No.2)	12V each (No.2)	12V each (No.2)
<b>IDRAULICA</b>			
Transmission	<b>DANFOSS</b>	<b>DANFOSS</b>	<b>DANFOSS</b>
Drive pump displacement	2x90 cc	2x130 cc	2x130 cc
<b>DUMPER</b>			
Length of dumper	3.0 m	3.0 m	3.6 m
Width of dumper	2.5 m	3.0 m	3.0 m
Dumping angle	60°	60°	60°

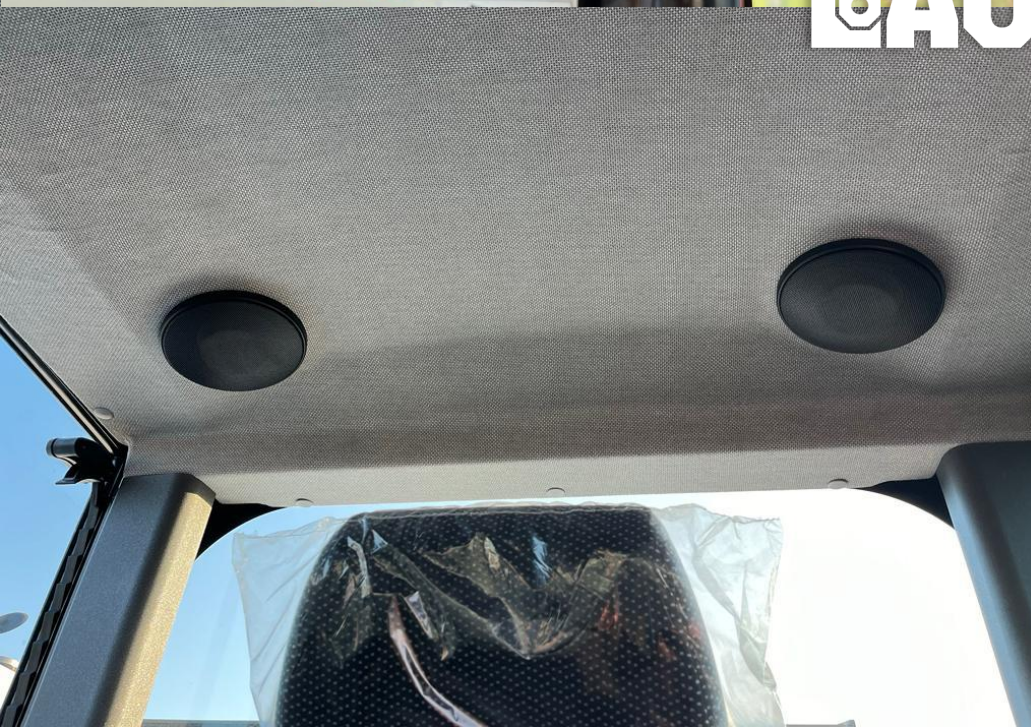
# CABIN

- LEFT OPEN **DOOR**
- **AIR** CONDITIONED
- PNEUMATIC **SEAT**
- CAMERA **DISPLAY**
- ERGONOMIC **JOYSTICKS**
- **ROPS** CABIN





**L AURINI**



# HOODS

- AUTOMATIC OPENING (option)  
linear actuators (controls in the cabin)
- GLOVE BOX





**MAURINI**

