

# MRT-330R

**LAURINI**



**Laurini Officine Meccaniche Srl**

Località Spigarolo, 43011 Busseto (PR), Italy

Phone: +39 0524.91844 Fax: +39 0524.91428

[www.laurini.com](http://www.laurini.com)

E-mail: [laurini@laurini.com](mailto:laurini@laurini.com)

# MRT-330R

Our new series of **rotary dumpers** with **rubber tracks** has truly exceptional and cutting-edge features:

The perfect match between the 302HP Caterpillar C7.3 engine and the two 130 c.c. Danfoss pumps controlled by Plus1 electronics, allows the best use of power and makes counter-rotation of the tracks possible even when fully loaded.

30,000 Lbs. (14 Tons) load capacity, hardox dump body, super comfortable cabin, pneumatic seat, dual rear camera and right side, single or double seat with ergonomic joysticks.





# TECHNICAL DATA SHEET

MRT-330R

## PERFORMANCE

Carrying Capacity	Lbs / kg	30,864 lbs / 14 tons
Speed – 1st gear	Mph / km/h	2.5 mph / 4 km/h
Speed – 2nd gear	Mph / km/h	6,2 mph / 10 km/h
Gradeability (empty)		58% (30°)
Bed dump capacity	yd <sup>3</sup>	9

## DIMENSIONS

Total length	Ft / m	20',78 / 6.3 m
Total width	Ft / m	9',85 / 3 m
Wheelbase	Ft / m	12'30 / 3.75 m
Crawler distance c/c	Ft / m	6',88 / 2,10 m
Crawler width	Ft / mm	2',62 / 800 mm
Total height	Ft / m	10',50 / 3,30 m
Machine weight (empty)	Lbs / kg	41888 lbs / 19.000 kg
Machine weight (load)	Lbs / kg	73000 lbs / 33.000 kg
Ground pressure (empty and full load)	Kg/cm <sup>2</sup>	0,45 Kg/cm <sup>2</sup> (Empty)
		0,68 Kg/cm <sup>2</sup> (Full load)

## ENGINE

Brand		<b>CATERPILLAR</b>
Emissions regulation available		Tier IV – Stage 5
Displacement	lt	7,3
Nominal output/rpm	kw/rpm	225 / 2200
Battery		12V each (No.2)

## HYDRAULIC

Transmission		DANFOSS
Drive pump displacement	cc	130 (for each side)

## DUMPER

Length of dumper	Ft / m	9',85 / 3,0 m
Width of dumper	Ft / m	9',85 / 3,0 m
Dumping angle		55°

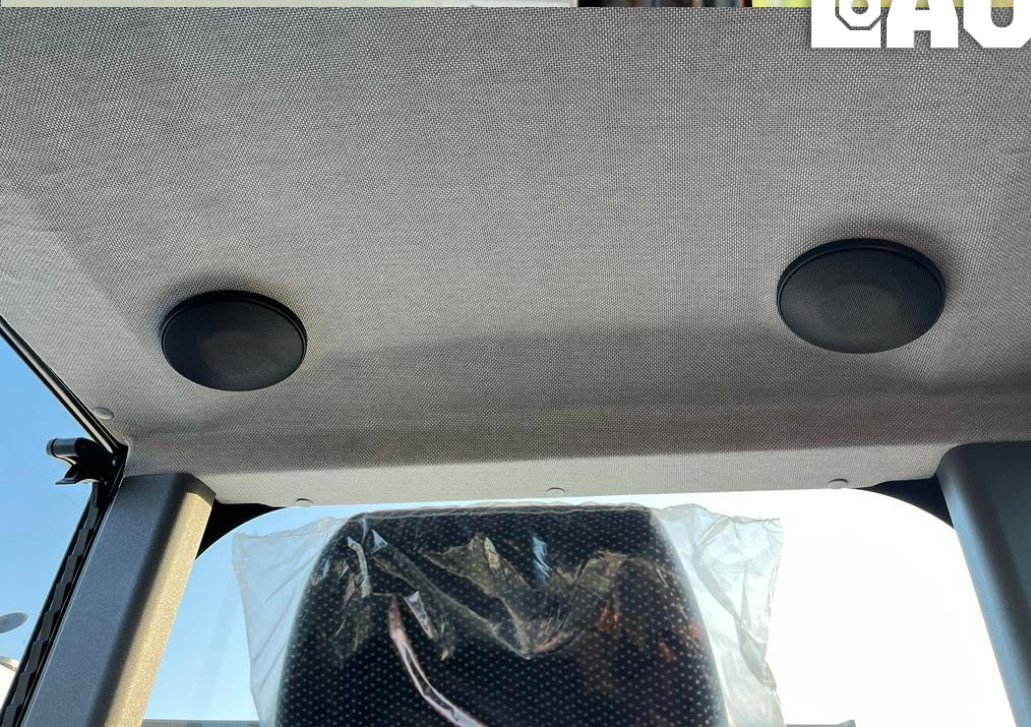
# CABIN

- LEFT OPEN **DOOR**
- **AIR** CONDITIONED
- PNEUMATIC **SEAT**
- CAMERA **DISPLAY**
- ERGONOMIC **JOYSTICKS**
- **ROPS** CABIN





**AURINI**



# HOODS

- **AUTOMATIC OPENING**  
linear actuators (controls in the cabin)
- **GLOVE BOX**





**MAURINI**

