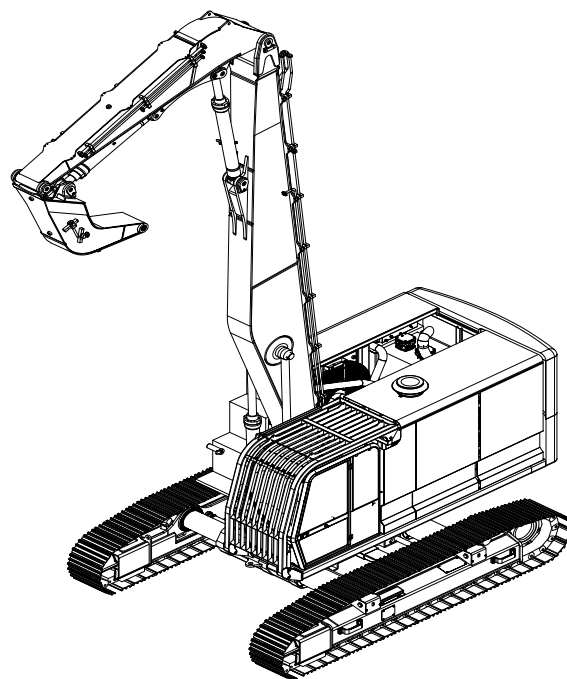


**LAURINI**



**Sheet Pile**

**LAURINI  
PL380-16**

**Data Sheet**









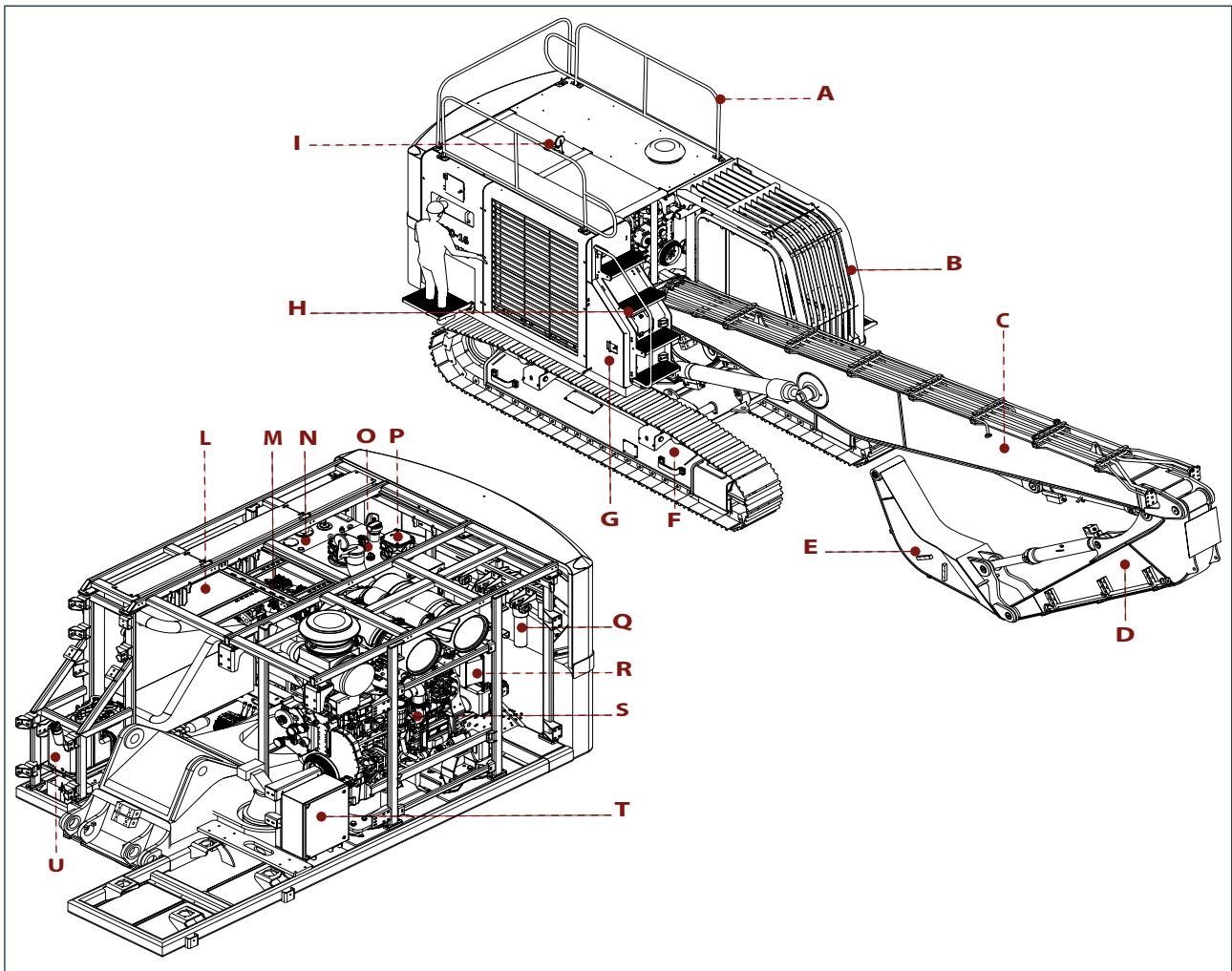


## General description of the machine

The machine is designed for the installation and removal of sheet piles, i.e. steel construction components that, thanks to a vertical interlocking system, are used to create continuous walls fixed into the ground.

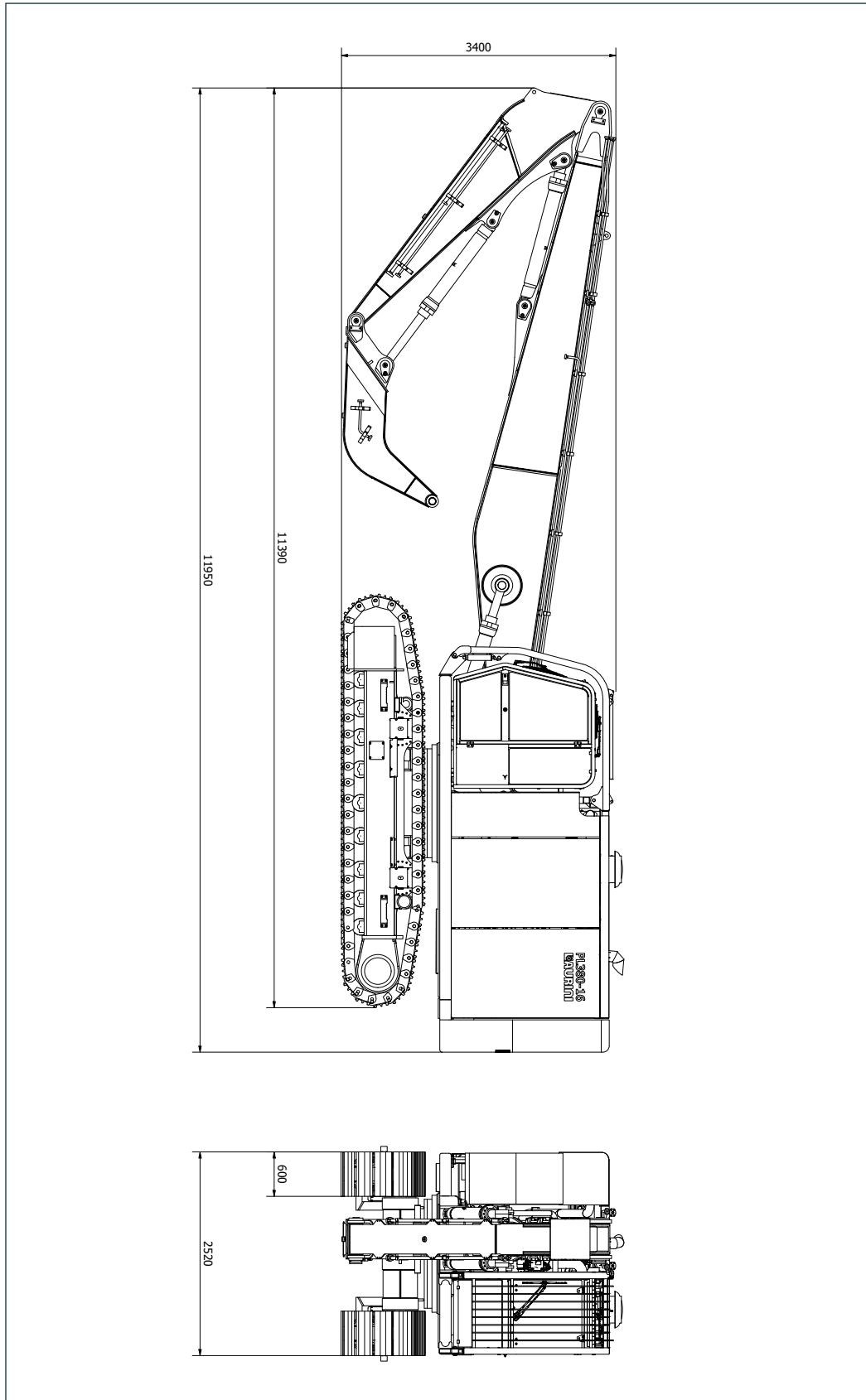
The machine is controlled by a single operator present in the cabin.

## Main organs

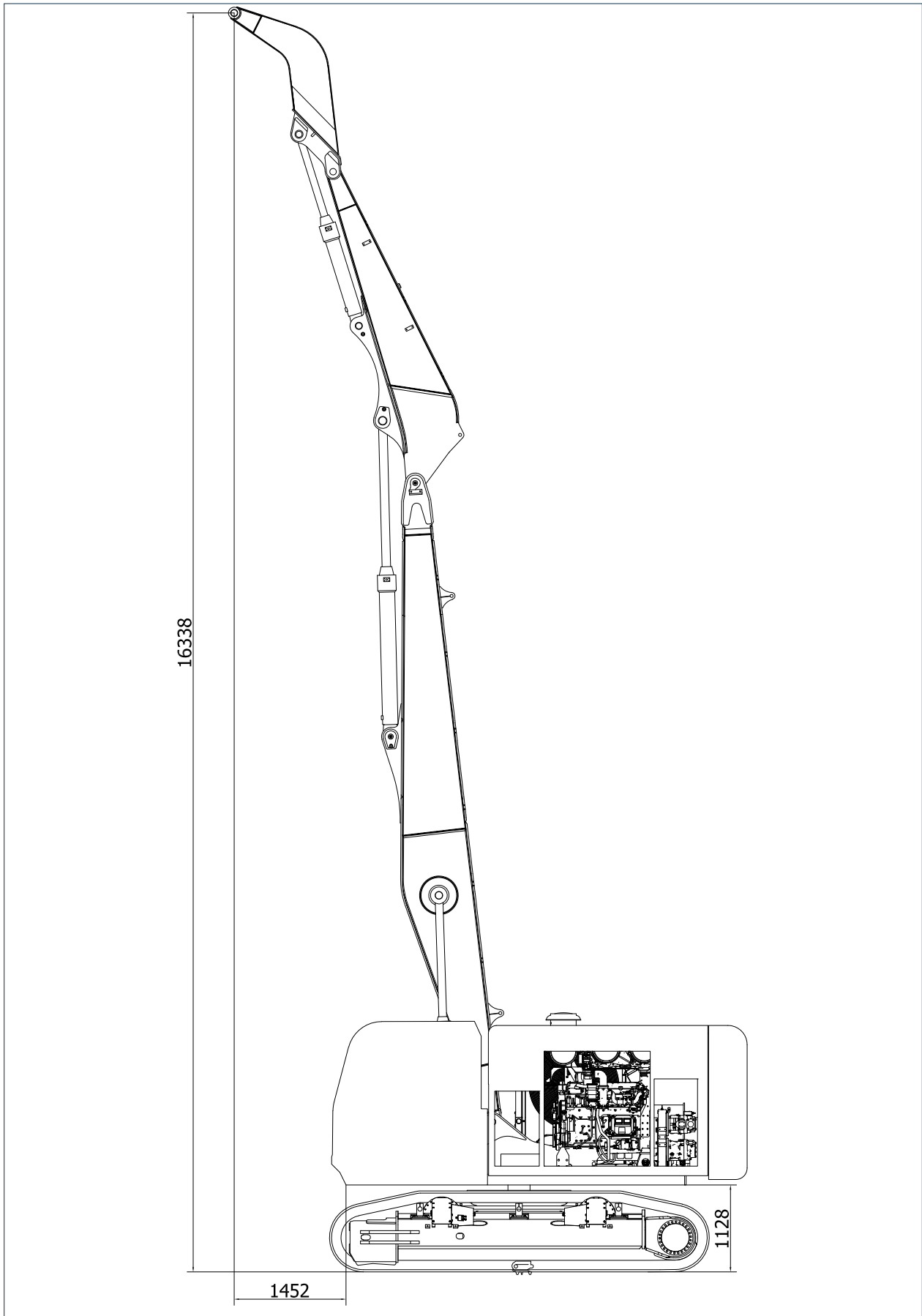


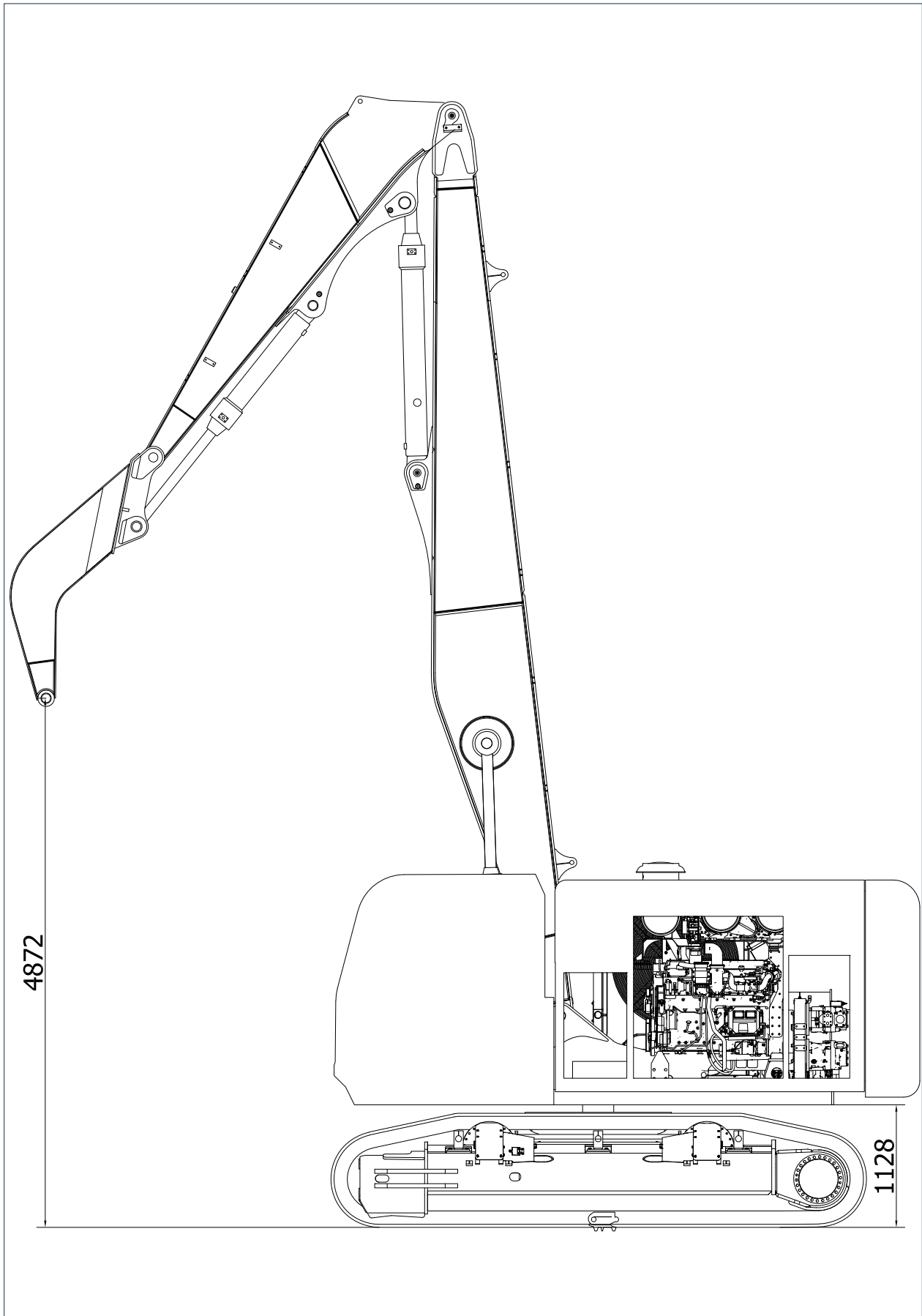
- |   |                                   |
|---|-----------------------------------|
| <b>A)</b> Railing                       | <b>P)</b> Combined filters        |
| <b>B)</b> Cabin with opening protection | <b>Q)</b> Delivery filters        |
| <b>C)</b> Base arm                      | <b>R)</b> Engine electrical panel |
| <b>D)</b> Forearm                       | <b>S)</b> Endothermic Engine      |
| <b>E)</b> Falcon                        | <b>T)</b> Electrical panel        |
| <b>F)</b> Track                         | <b>U)</b> Urea tank               |
| <b>G)</b> Battery compartment           |                                   |
| <b>H)</b> Footboards                    |                                   |
| <b>I)</b> Raincover                     |                                   |
| <b>L)</b> Heat exchanger                |                                   |
| <b>M)</b> Distributors                  |                                   |
| <b>N)</b> Diesel tank                   |                                   |
| <b>O)</b> Hydraulic oil tank            |                                   |

Overall Dimensions (Transport)





**Operating Functioning****Straight working arm**

**Operating Functioning****Bent working arm**

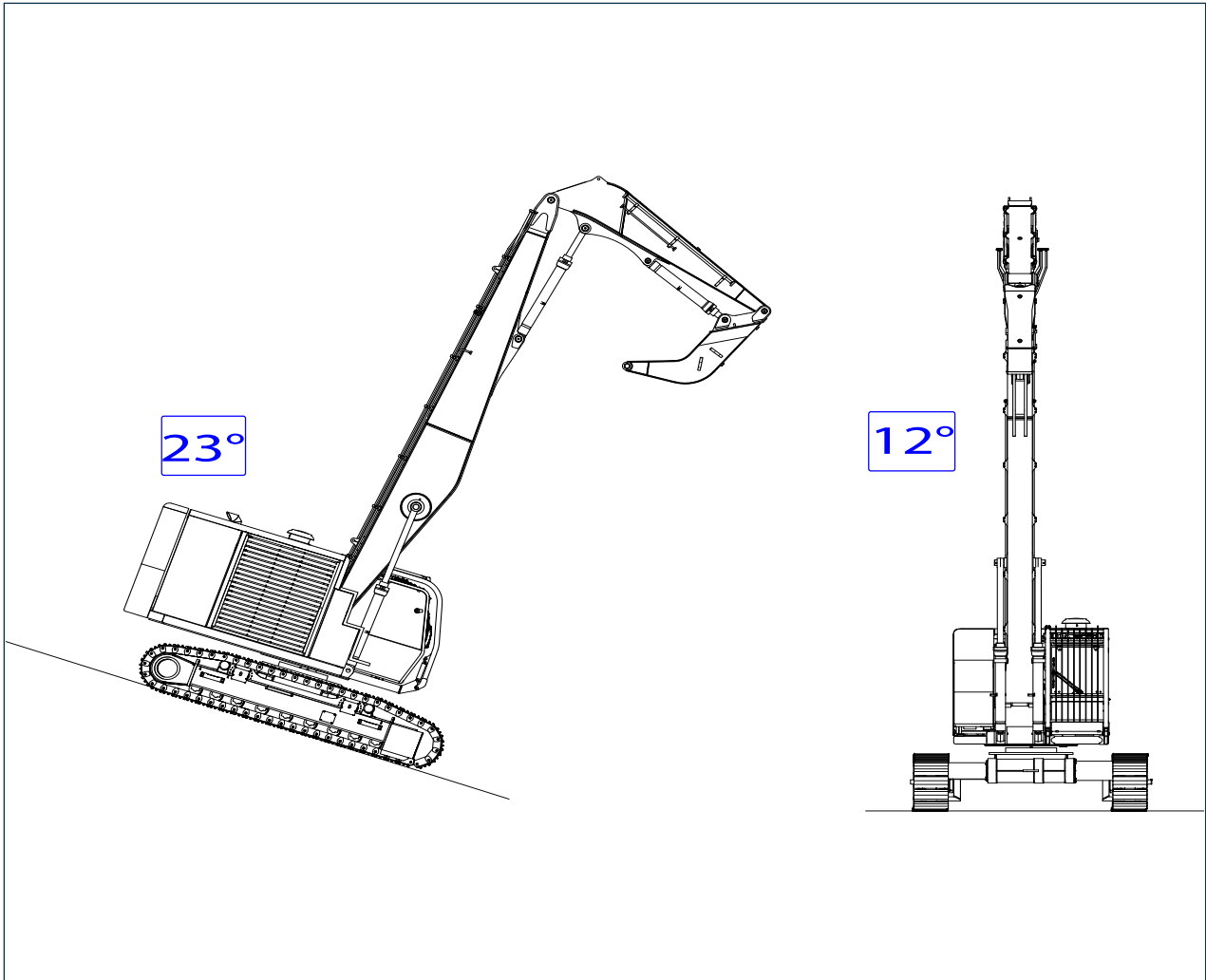
<b>Technical data</b>		
<b>Undercarriage</b>		
Variable width (closed)	mm	2550
Variable width (open)	mm	3750
Skate width	mm	600
<b>Hydraulic/electrical system</b>		
Hydraulic oil tank capacity	l	640
Diesel tank capacity	l	410
Maximum hydraulic system pressure	bar	360
Electrical system voltage	V	24
Total mass (with tank filled)	kg	38500
<b>Endothermic engine</b>		
Engine	n°	1
Brand		CAT
Model		C13
Power	kW	340kW
<b>Variable pump (dedicated for accessory)</b>		
Pump	n°	1
Brand		DANFOSS
Model		H1P130
Flow rate	l	260
<b>Vibro hammer</b>		
Eccentric moment	Kgm	17
<b>Pump coupler</b>		
Pump coupler	n°	1
Brand		STIEBEL
Model		4399.K4.09905
<b>Batteries</b>		
Batteries	n°	2
Voltage	V	80
Current intensity (for each battery)	A	120
Capacity	A/h	775

**Further technical data:**

- Large combined air-oil radiator mass;
- Possibility of configuration with various accessories (vibrating hammer or drilling head);
- Possibility of configuration with double or triple arm.

### Maximum permissible slopes

The illustration shows the maximum permitted slopes of the machine during work and transfers.



---

## Noise emissions

---

The noise level depends on the number of revolutions of the electric motors, the amount of machines operating nearby and the area surrounding the use of the machine (for example: reflective surfaces, etc.).

The weighted sound power level (A) actually measured on the machine in operating conditions is to be defined with the following data:

-minimum operating : 102.3 db(A).

-maximum operating : 117.2 db(A)

The operator and those around him must use personal protective equipment (ear muffs, earplugs, etc.) to reduce the noise level at their ears and, if necessary, schedule work shifts that include breaks to reduce exposure to noise.

---

## Environmental operating limits

---

The machine works regularly under the following environmental conditions:

- **Maximum altitude:** 3000 m.
- **Environment temperature:** -20 ÷ +40 °C.
- **Maximum relative humidity:** 80%.
- **Lighting:** The machine is equipped with lights for working in conditions of poor visibility (except for night work).  
For night work, provide the work area with adequate artificial lighting.



**LAURINI**  
**Officine Meccaniche**

Loc. Spigarolo  
43011 Busseto PARMA - ITALY  
Tel.: +39 0524 91844  
Telefax: + 39 0524 91428  
e-mail: [laurini@laurini.com](mailto:laurini@laurini.com)