

SETTANTA

 **LAURINI**

NEW CONFIGURATION
to optimize performance

COMPACT MACHINE BODY
for standard transport

BEST WEIGHT/PERFORMANCE RATIO
demolition carrier in the market



SETTANTA

70

MACHINE BODY

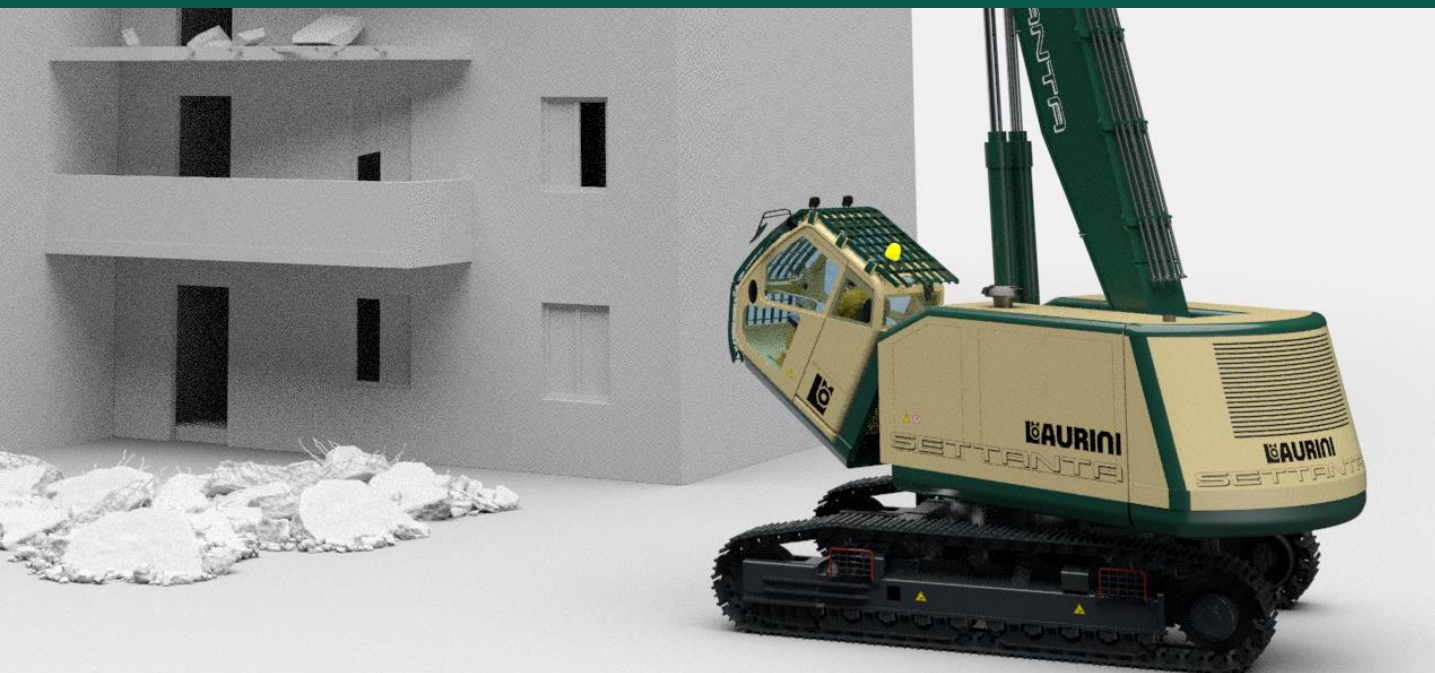
PERFORMANCE COMPARABLE TO A CONVERTED 45 TON EXCAVATOR

MACHINE BODY

- Compact with dimensions and weight for standard transport
- Weight: 29.500,00 kg
- Weight balance optimized for demolition and digging works.
- Rear base arm pivot
- Counterweight – integrated in the frame

CABIN

- High visibility with FOPS/ROPS certification, 30° tilting
- Display for machine parameters, anti-tipping system and cameras
- Heating and air conditioning
- Electronic controls
- Possibility to select different working modes and configure five different tools



SETTANTA

70

UNDERCARRIAGE

- Hydraulic widening gauge system with controls in cabin (2550 mm – 3750 mm)
- Track length 5000 mm
- Chain pitch 203,2 mm
- Shoes 550 mm
- Full-length stone guards as standard
- Heavy duty fifth wheel - 1400 mm diameter

ENGINE

- Scania DC09 - 350 HP / 257 KW

HYDRAULIC SYSTEM

- Danfoss
- load sensing pump - dedicated exclusively to the tool, 350 l/m – 350 BAR with booster up to 380 BAR
- Possibility to select different working modes and configure five different tools

RADIATOR

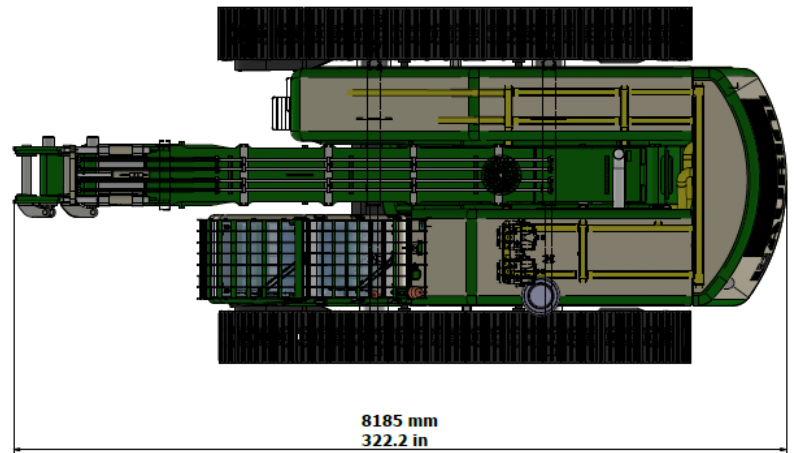
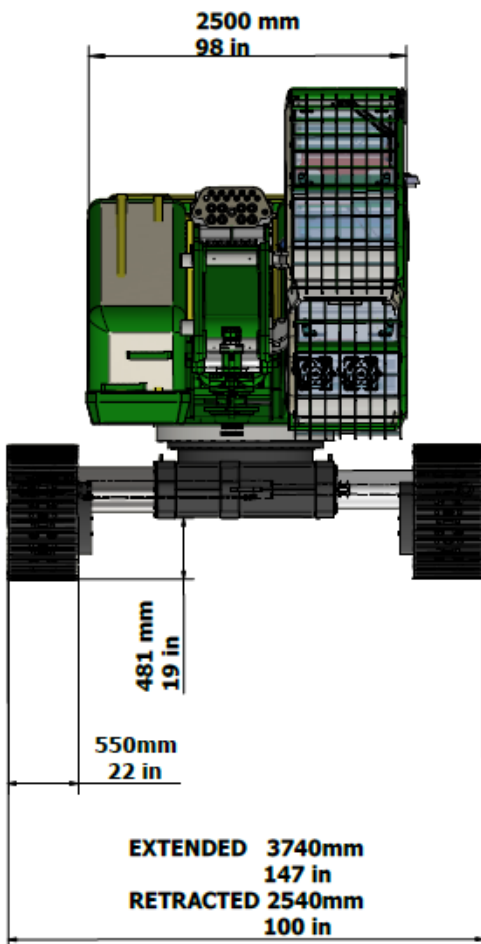
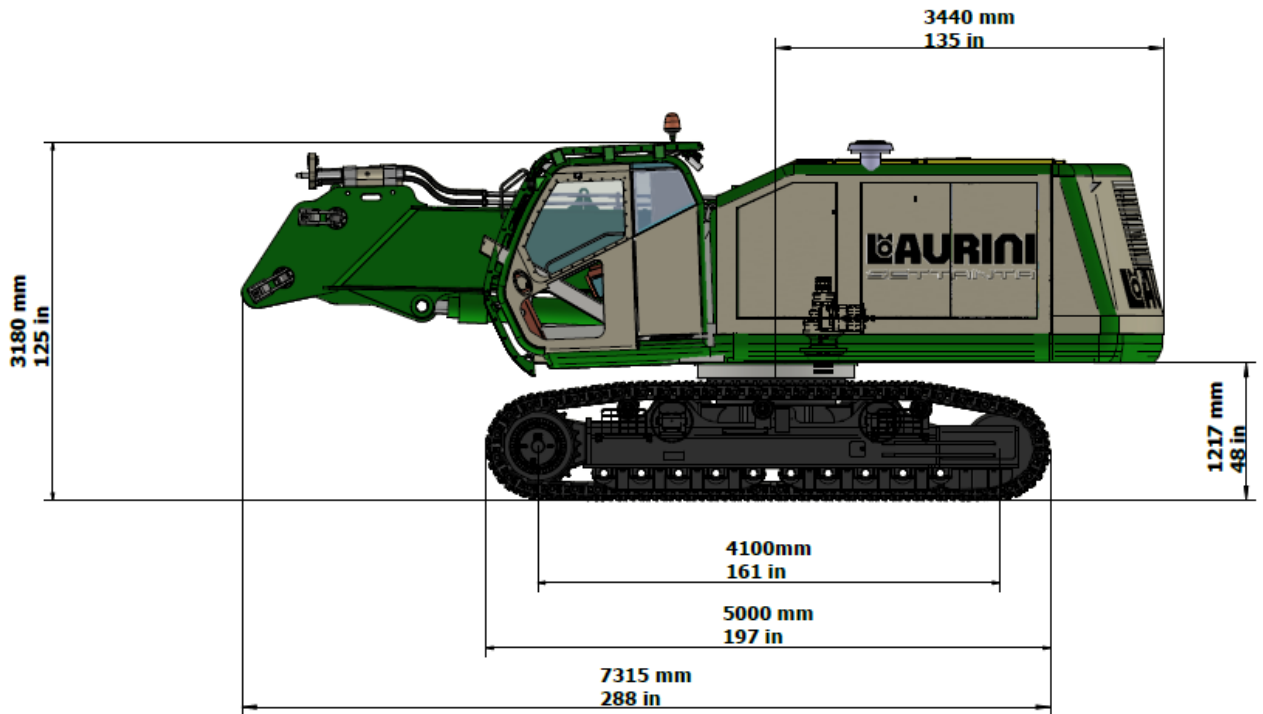
- Combined with Fandrive and Auto-reverse and optimized for heavy duty use



SETTANTA

70

DIMENSIONS



SETTANTANTA

70

ARMS

BASE ARM

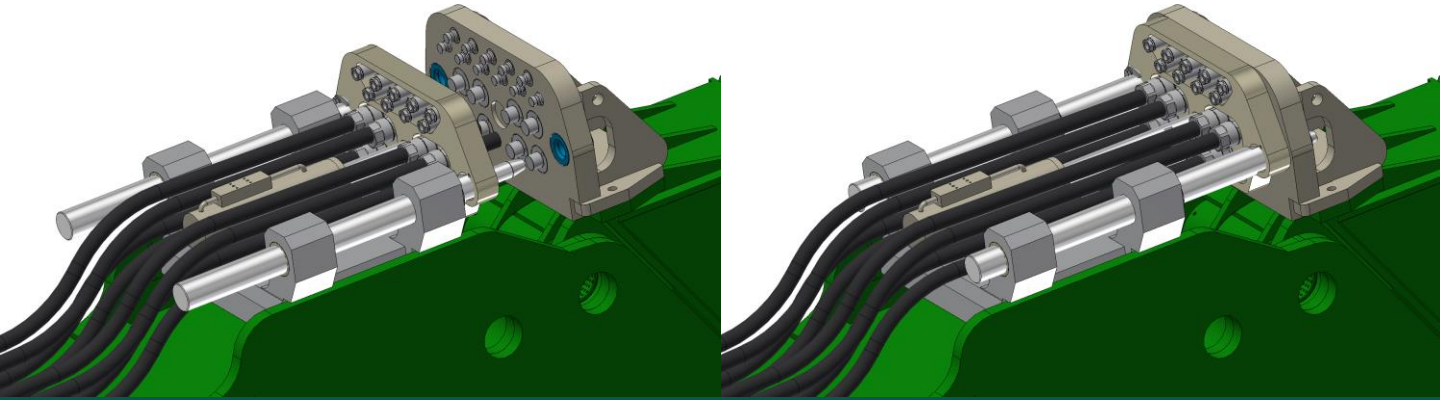
- Rear base arm pivot to improve lifting and outreach capacity
- Laurini hydraulic hoses and wiring quick coupling system

DEMOLITION ARM

- 24,5 mt height to the pin – 3000 kg tool
- Video camera with display in the cabin
- Dust suppression system predisposition

TRIPLE DIGGING ARM

- 14 mt height to the pin – 5000 kg tool
- Dust suppression system predisposition
- Ideal for ground crushing and shearing



New Laurini hydraulic hoses and wiring quick coupling system (**HQCS**), controlled from the cabin



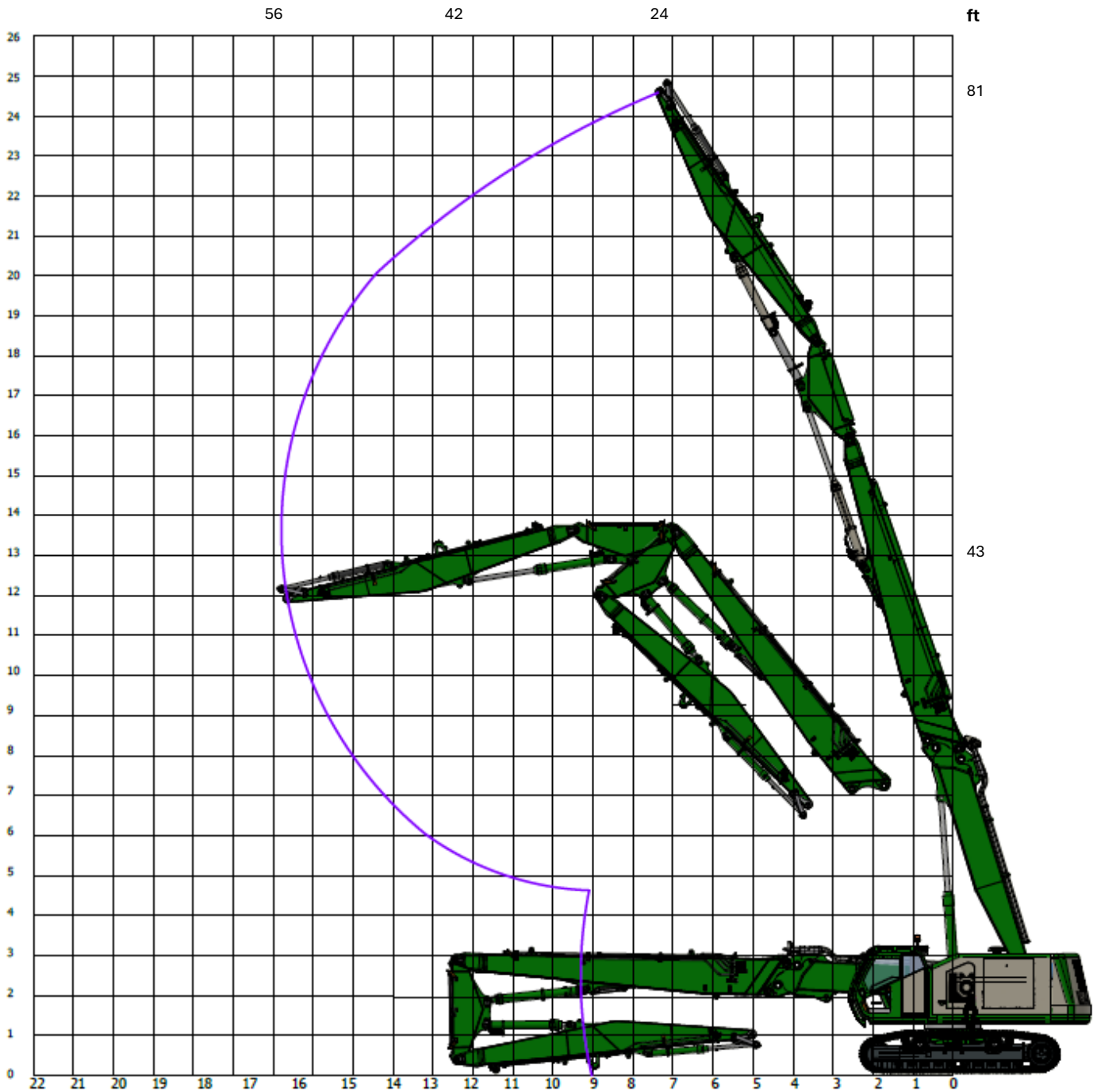
SETTANTA

70

DEMOLITION ARM

24,5 mt height to the pin

3000 kg tool



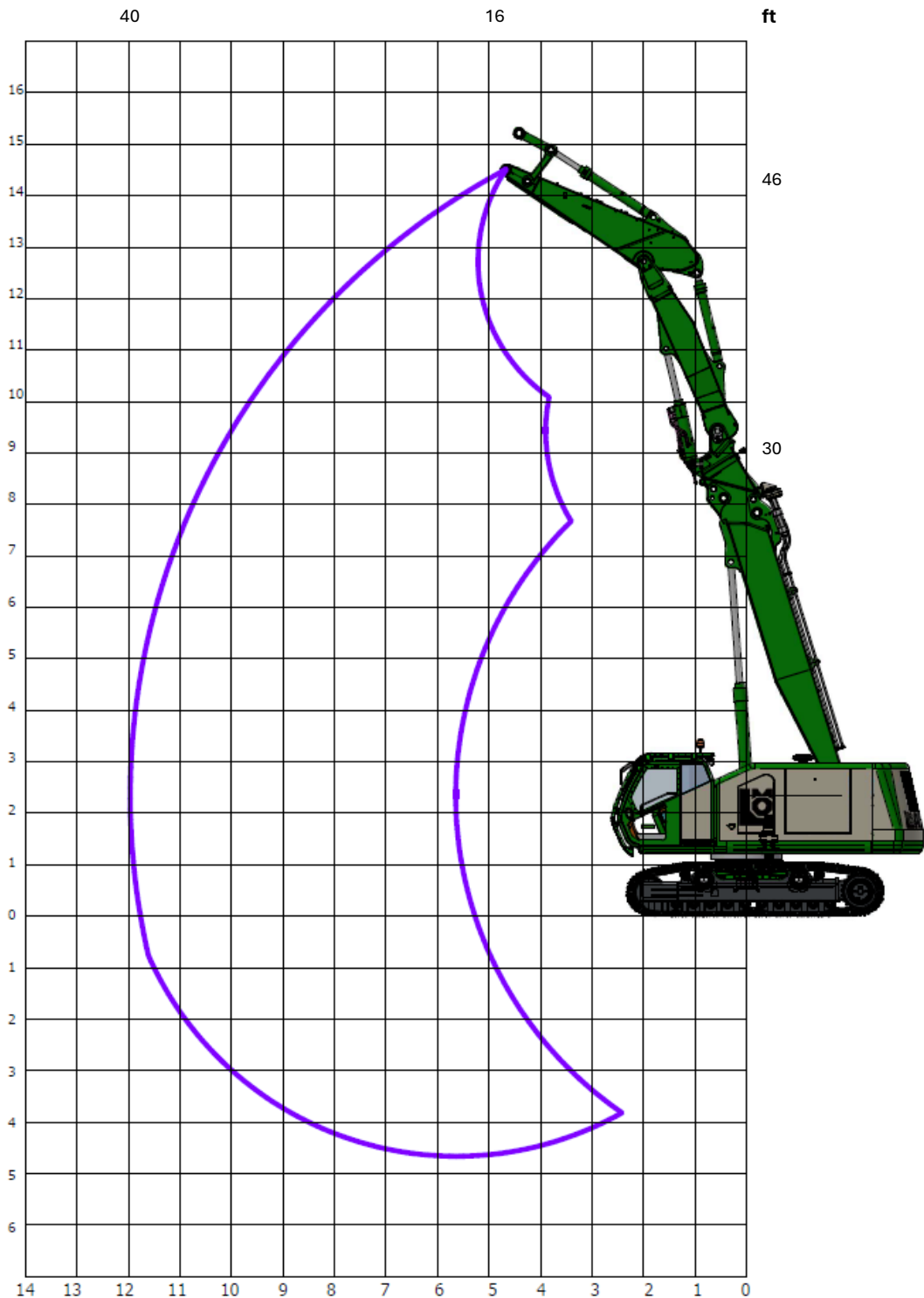
SETTANTA

70

DIGGING ARM

14 mt height to the pin

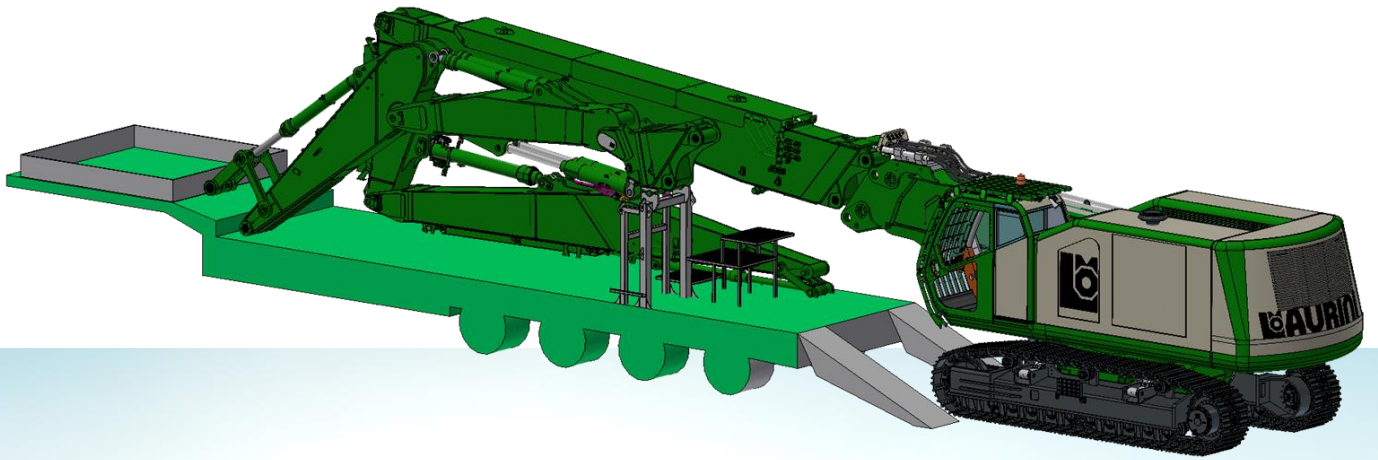
5000 kg tool



SETTANTA

70

TRANSPORT



SELF-ASSEMBLY MACHINE

DOES NOT REQUIRE LIFTING EQUIPMENT OR MACHINES
FOR LOADING/UNLOADING AND ARMS ASSEMBLY



SETTANTA

70



SETTANTA

70

SETTANTA

 **LAURINI**

Laurini Officine Meccaniche Srl

Località Spigarolo, 43011 Busseto (PR), Italy

Phone: +39 0524.91844 Fax: +39 0524.91428

www.laurini.com

E-mail: laurini@laurini.com

VATIT 02164990349